



FIAMMA F65S
FIAMMA F65L

F65 • Maintenance and repairs

INDEX

A

LEAD BAR INCLINED

p.3

5 minutes

1 person

Necessary tools: **2**

B

FABRIC REPLACEMENT

p.5

30 minutes

2 persons

Necessary tools: **1** + **3**



Necessary tools:

- 1** Allen key 5 mm
- 2** Torque or ratchet wrench 10 and 13 mm
- 3** Philips and Flat screwdriver
- 4** Meter

LEAD BAR INCLINED



Problem:

A.1 • The lead bar of the awning is lower on one side (left or right).

Warning: *Ensure that shock absorber bolts are not blocked in the upper slots.*



Solution:

A.2 • Adjust the upper bolt of the Dual Shock Absorber by tightening or loosening slightly on the side where the lead bar is lower (wrench 10mm).



FABRIC REPLACEMENT

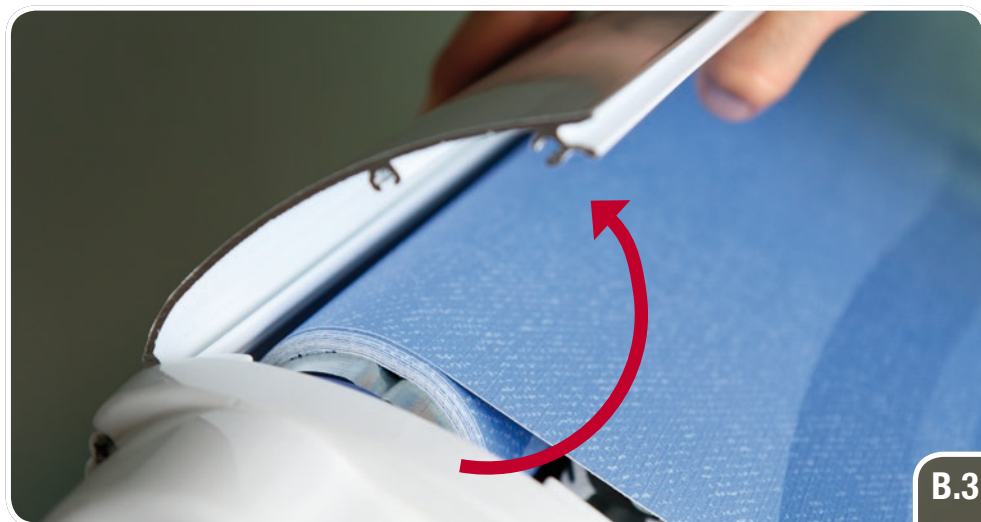
B.1 • Fully open the awning.



B.1

B.2 • Remove the screws on both of the end covers as shown in images.





B.3 • Unhook the upper case cover by lifting it upwards.

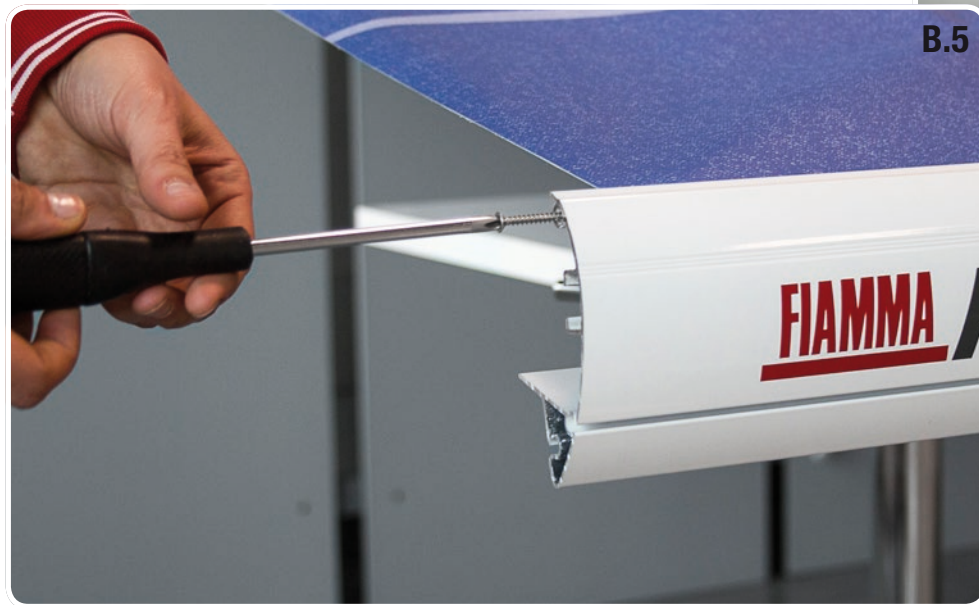




B.4 • Remove the end caps and the legs of the lead bar (Allen wrench 5mm).

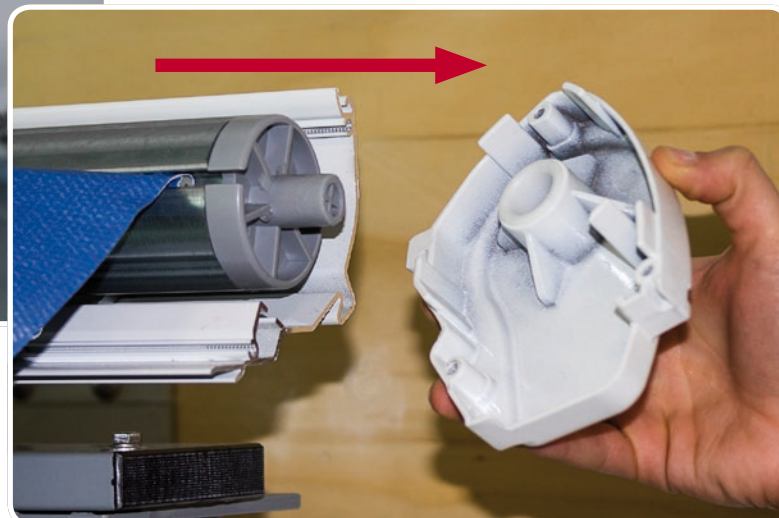


B.5 • Remove the screws that secure the fabric on both sides of the lead bar.





B.6 • Remove the right end cap of the case box.





B.7 • Lift the roller tube and remove it from the left end cap and roll the fabric up.





B.8 • Remove the roller tube from the lead bar of the awning.



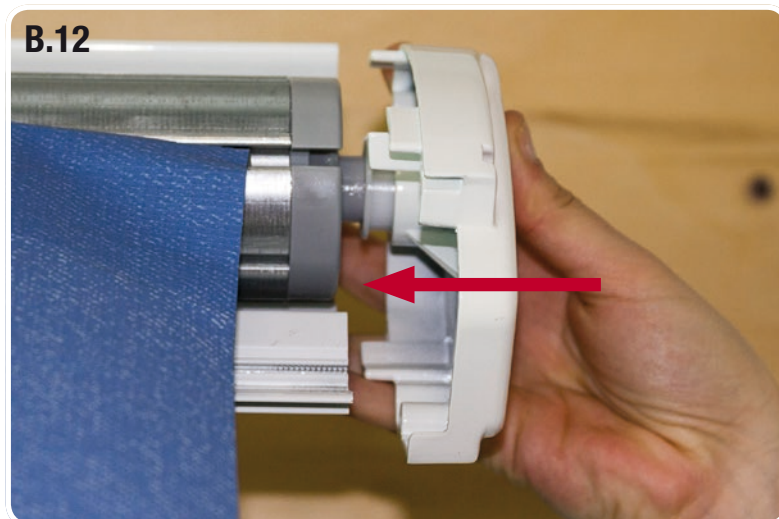
B.9 • Slide the new fabric in the lead bar of the awning.



B.10 • Unroll the new fabric.

B.11 • Insert the roller tube in the left end cap.





B.12 • Reassemble the right end cap of the case box.



B.13 • Fasten the right end cap with its two screws.





B.14 • Reassemble the cover on the case.



B.14

B.15 • Fasten the cover of the case with its two screws.

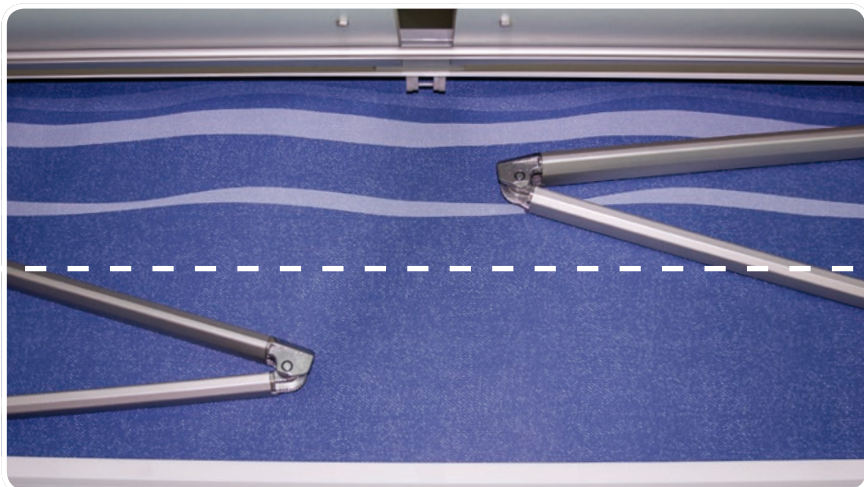


B.16

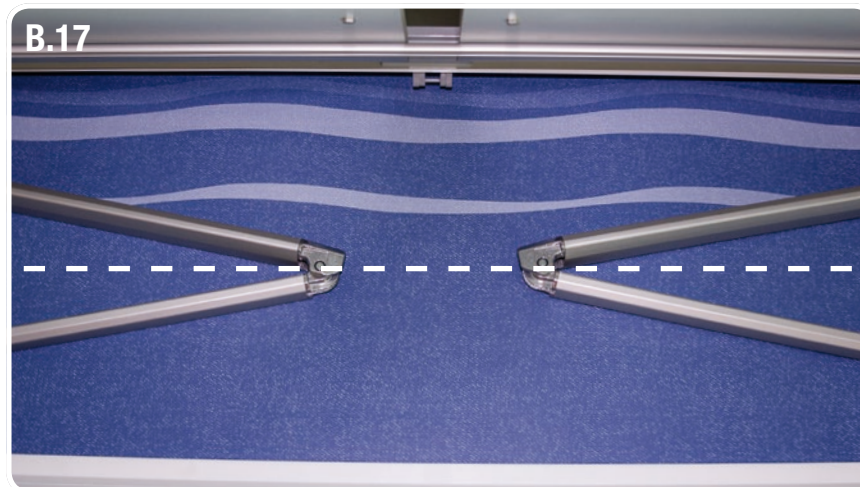


B.16 • Close the awning.

B.17 • When the closure is nearly complete check that the arms are aligned: if they were not, align them manually.



X



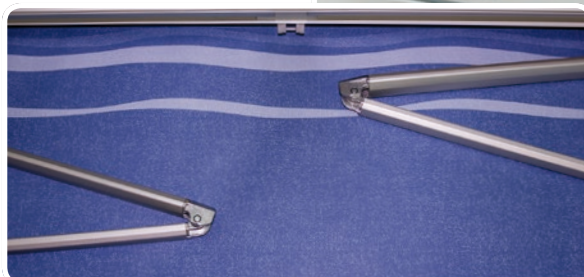
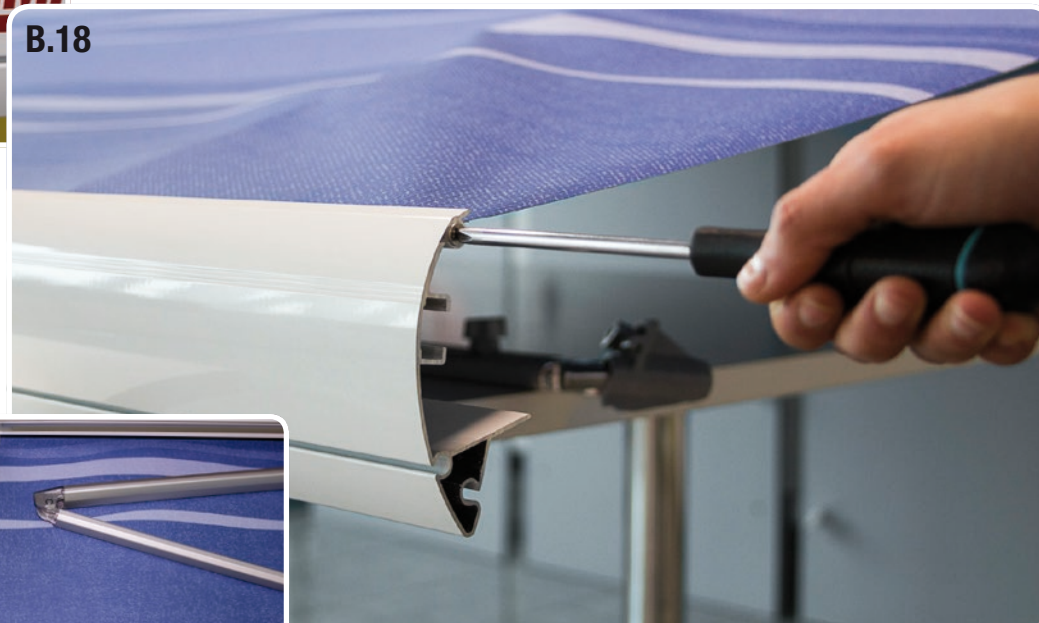
OK



B.18 • Fasten the fabric to the lead bar with its two screws; verify that the arms remain aligned.

After tightening the screws, if the arms are not aligned, further tighten the screw on the side where the arm is closer to the lead bar.

B.18





B.19 • Reassemble legs and end caps on the lead bar.

